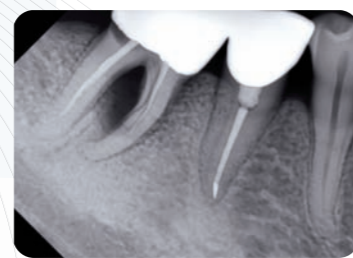


EZ Sensor

EzSensor: the Premium Choice for your Images.

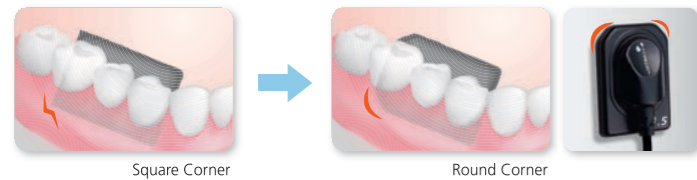


EzSensor is the latest addition to the family of digital radiographic imaging products. Rounded corners and smooth edges are the result of a completely new design concept focused on reliability, durability, and patient comfort.



Ergonomic

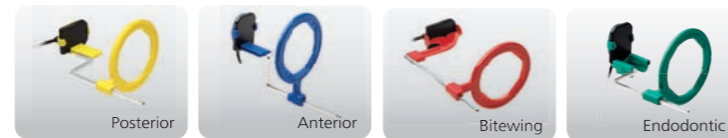
EzSensor is design with rounded corner and thinner thickness to ensure total patient comfort and easy positioning. These ergonomic features of the sensor offer the patient exceptional satisfaction during image taking.



Easy to Use

Customized Cone Indicator (XCP-DS) for EzSensor by RINN (optional)

- Improved patient comfort & easy positioning
- Precise device positioning for a required image
- 4 types of color for intuitive discernment of use; Bitewing, Interior, Posterior, Endodontic placement.



Durability

The EzSensor's unique designed makes it extremely durable. The exterior is made of rugged aluminum, and the interior is covered with PORON to absorb any external shock. Furthermore, a reinforced, flexible cable attachment protects the sensor from excessive bending.



Silicon cover

EzSensor comes with a convenient silicon cover that protects the sensor from scratches or accidental dropping. The silicon cover also provides the patient with greater comfort during X-ray procedures as well as prevents damage caused by the sensor being pushed in the sensitive areas of a patient's mouth.



EZ Sensor

Flexibility

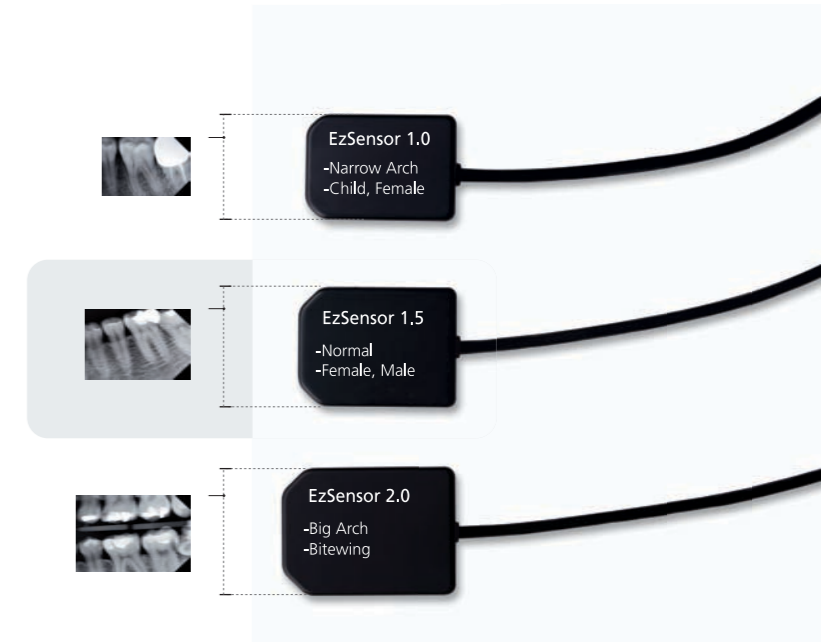
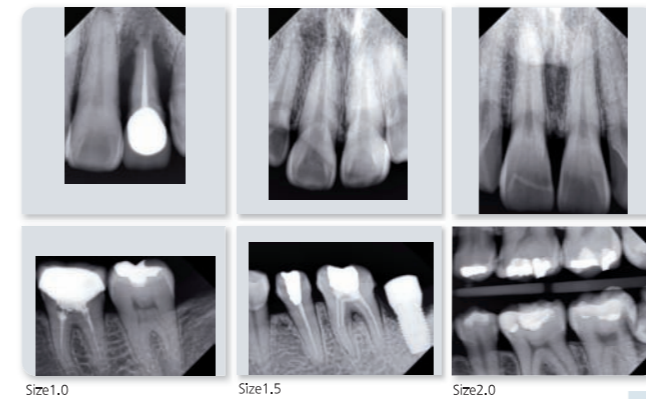
EzSensor is available in three different sizes (1.0, 1.5, and 2.0) to accommodate different diagnostic needs depending on the patient's condition. EzSensor 1.0 offers exceptional patient comfort; it is designed for pediatric care and adults with narrow arches. EzSensor 1.5 offers more universal application for the majority of patients, whereas EzSensor 2.0 is designed for patients with wider arches and special diagnostic mode such as bitewing image.

Active Area by Size

	active area	Purpose
Size1.0	30 x 20mm	Narrow Arch (Child, Female)
Size1.5	33 x 24mm	Normal (Female, Male)
Size2.0	36 x 26mm	Bitewing, Big Arch

The Superior Image Quality

EzSensor is based on CMOS technology. It provides consistently higher resolution and clearer image for exact diagnosis & treatment planning.



Specification

	EzSensor 1.0	EzSensor 1.5	EzSensor 2.0
Detector	CMOS photodiode array		
Dimension(WXLXT)	26.1 x 36.8 x 4.95 mm	29.2 x 38.7 x 4.95 mm	31.5 x 42.8 x 4.95 mm
Active Area	30x20mm	33x24mm	36x26mm
Pixel Pitch	0.035mm		
Signal to Noise Ratio	>37dB		
Sensor Thickness	About 4.95mm		
Cable Length	3m		

Address
473-4 Bora-Dong, Giheung-Gu,
Yongin-Si, Gyeonggi-Do, Korea 446-904
www.humanray.com

Fast, efficient workflow

Experience high efficiency with EzSensor with its unmatched simplicity and reliability. EzSensor offers you faster image acquisition and real-time transmission. EzSensor uses USB 2.0 for unparalleled connectivity to any PC in the clinic.

